

MORGAN COUNTY NEEDS PROJECT – ROOF REPLACEMENT AT WIDMEYER ELEMENTARY



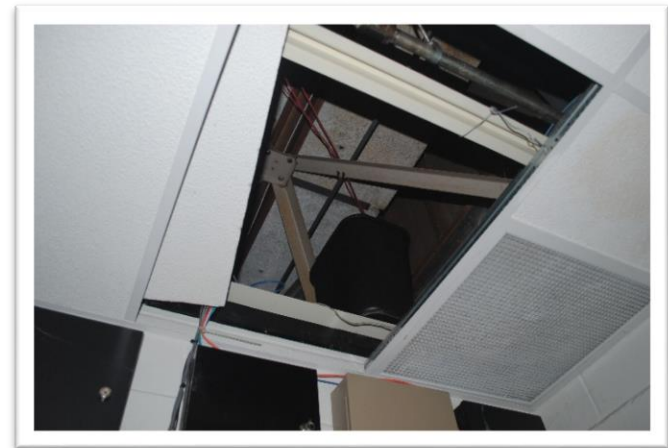
Widmeyer ES which is prominent in the community as seen from Rt.522.



The main roof looking toward the south shows areas of ponding water and deteriorating seams.



The roof experiences severe ponding water around roof top units and duct work.



Trash cans and buckets have been placed in the ceiling to catch leaks in an attempt to limit disruption and save ceiling tiles.