

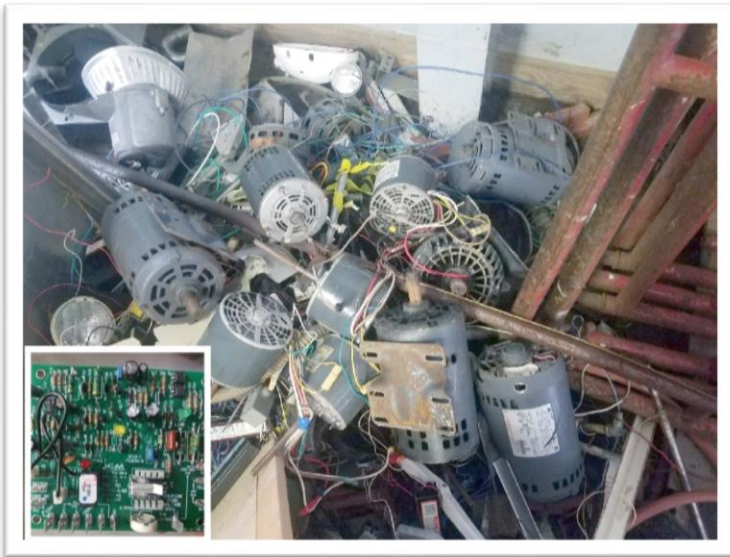
TUCKER COUNTY NEEDS PROJECT – TUCKER VALLEY ES/MS HVAC, ROOF & LIGHTING REPLACEMENT



The maintenance personnel are concerned that only corrosion is holding the cooling tower together.



The aging roof shows seam separation, soffit, and flashing issues.



The county has difficulty replacing old motors and circuit boards failing in equipment.



The vents and lights in the two-story dining area are too difficult to clean, replace, and service.