

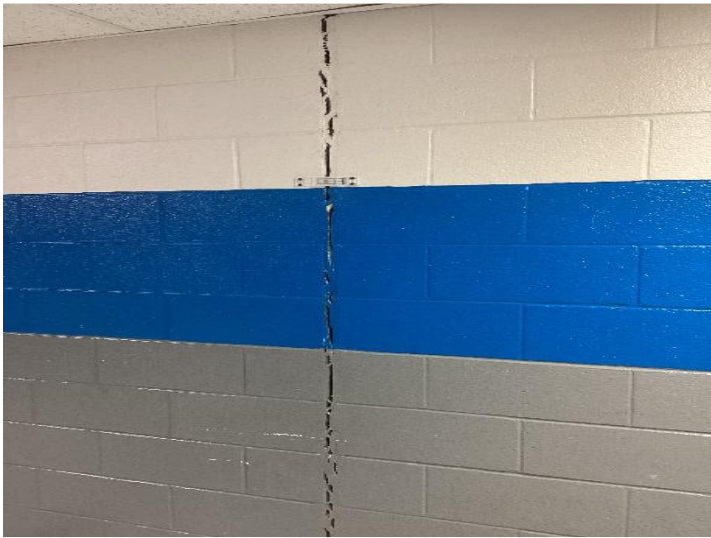
School Building Authority of West Virginia
LOGAN COUNTY— LOGAN MIDDLE SCHOOL STRUCTURAL STABILIZATION



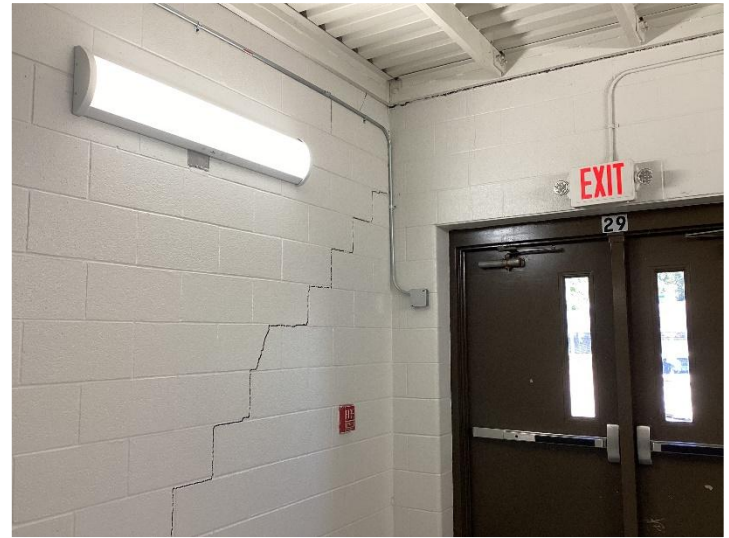
Logan Middle School (1997)



One of several areas within the school showing significant signs of cracking from settlement.



A large crack that Logan County has monitored over the last year. The width of the expansion continues to grow.



The settlement has caused both horizontal and vertical stress cracks throughout the building.