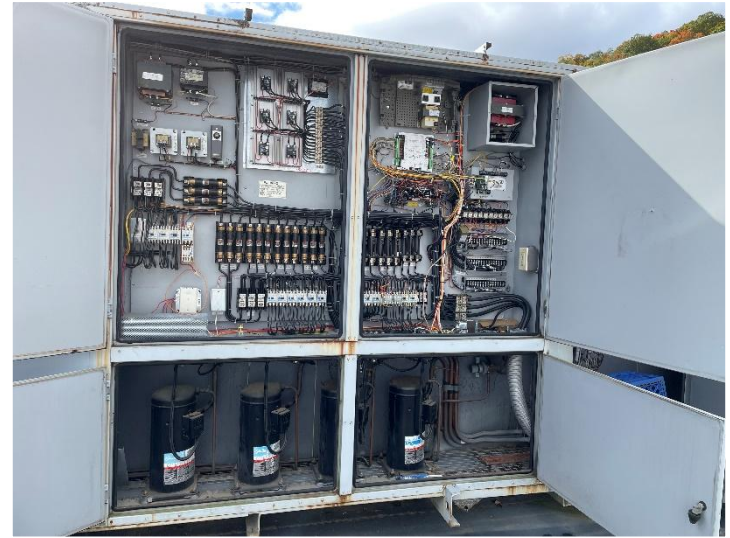


School Building Authority of West Virginia  
MORGAN COUNTY - WIDMYER ES & BERKELEY SPRINGS HS - HVAC REPLACEMENT



At Widmyer ES, insulation on exterior ducts is peeling which allows moisture to penetrate equipment.



At Widmyer ES, roof top unit. compressors in the lower half of image that are becoming obsolete.



At Widmyer ES, ductwork is exposed to elements and weather protection and insulation is separating and peeling.



Temporary equipment for air conditioning in the cafeteria of Berkeley Springs High School.