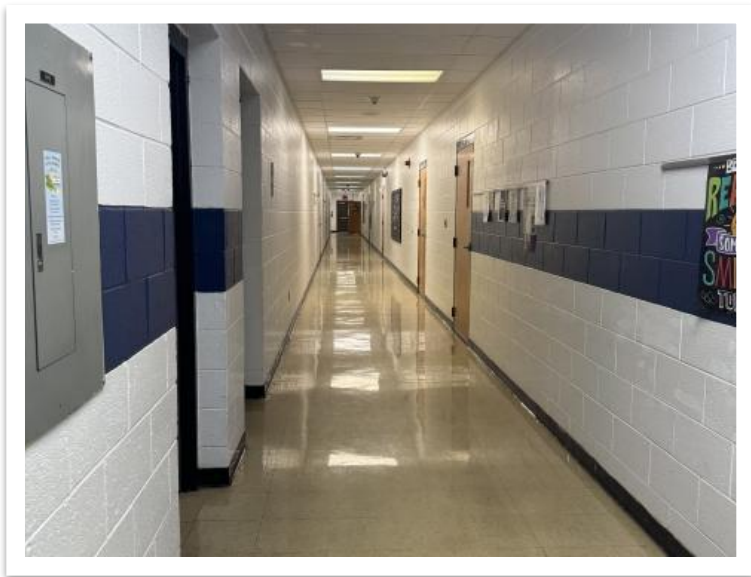
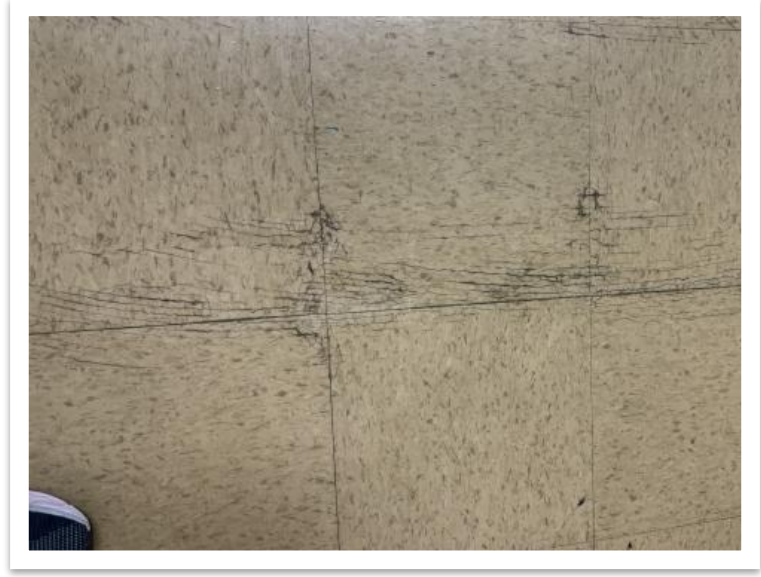


TUCKER COUNTY – DAVID THOMAS ES/MS INTERIOR AND EXTERIOR RENOVATIONS



Outdated lighting, ceilings and lack of sprinkler system are concerns at this facility.



Original floors that are cracking and scaling.



View of aging fire alarm components in the office with panels opened and closed.



Sprayed insulation roofing on gym that is failing at DTES/MS.